

TOUR MANAGER : PAKER PROD- Yann Pellet
+33 661 446 772 yann@pakerprod.bzh
1 rue Keramporiel
29900 Concarneau
Bretagne / France

Team : 5 musicians, 1 sound tech :

Tangi Le Gall-Carré : Accordion
Lionel le Page : Biniou - Uilleann Pipe
Tangi Oillo : Guitar
Youenn Roue : Bombard
Julien Stevenin : Bass

Sound Tech

Ronan Fouquet : +33 680 332 210 ronan.fouquet@gmail.com

Ludo Florez : +33 612 267 390 ludo.florez@gmail.com

No Tour manager follows the band on tour. A member of the band will take on this role on D-Day.
Collaborating with Paker Prod, he will be the band's reference about all the questions
(Organization, technical, logistics,...).

If any difficulties arise with this rider, please call us.



PRODUCTION

ACCESS :

Please provide an access plan to the place of the performance, as well as the contact details and access plans to the places of accommodation and catering.

PARKING LOT :

Closed or guarded parking near the stage for a 9 seater van.

DRESSING ROOM :

A lockable dressing room that can accommodate 6 people, will be available from our arrival until the departure of the band.

Please provide a quiet place for the acoustic instruments to tune in comfortably without disturbing the stage or backstage.

MEALS :

Full, hot meals, including 1 vegetarian and 1 without cheese, will be served to the team according to a schedule determined in agreement with production.

ACCOMMODATION :

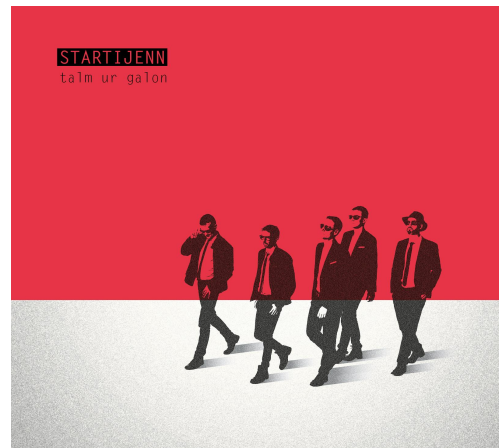
The producer of the concert will provide at his expense 6 single rooms in a hotel 2 stars ** minimum with closed or guarded parking. Plan that breakfasts can be taken very late and that the rooms are released for 12 noon at the earliest.

SCHEDULES :

Schedules will be validated before the festival with PAKER PROD. Startijenn need 2 hours for installation and sound check. The concert is about 1:30H.

MERCHANDISING :

A lighted area with a table. In any case, no percentage or any fee may be claimed by the venue or producer of the concert.



STAGE AREA

The producer of the event undertakes to respond to the technical request by implementing the corresponding professional means.

STAGE :

The stage will be flat, stable, smooth and matte black in every way. With a minimum opening of 8 meters with a depth of 6 meters. The background will be black and the sides blacked out.

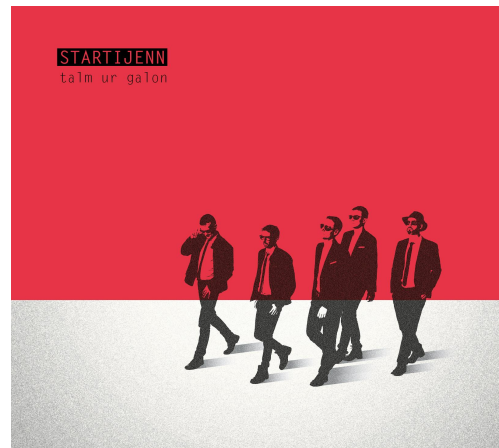
1 x Black Riser L:2 x l: 1m x H: 60cm
1 x flight case L60 l:60 h:80
5 x Mic boom stands for scenic design

BACKLINE :

Pipe : black piano bench or drum stool

Lighting :

Startijenn travels without a light technician. We will provide instructions as well as a simple light plot.



SOUND SPECS

PA SYSTEM :

A Professional 3 way sound system is required. It must provide a wide and coherent sonic coverage for all the audience and be able to produce 110dbA at the FOH position. PA should be operational at Startijenn crew get in and the system engineer in charge of the PA, must be present at all times until the end of the show.

We like: D&B, Adamson, L- Acoustic...

MIXING DESK :

FOH Desk MUST be directly in the center, 2/3 the length of the venue in front of the PA. The Stage/FOH power source must be earthed and on a separate generator from the Lighting source.

Startijenn provides a Midas M32 and a Midas DL32.

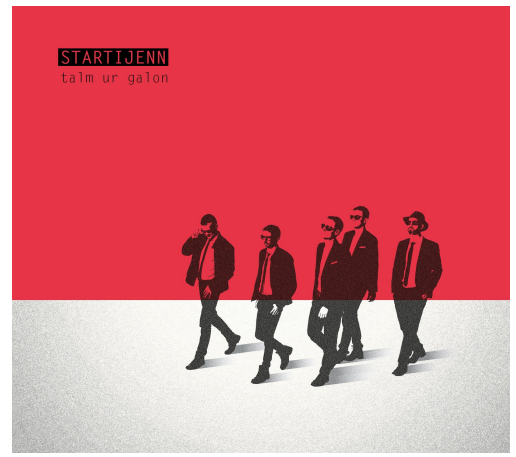
Please provide one cat5e wire for AES50 with one more cat5e wire between the mixing desk and stage for our wifi routeur.

MONITOR :

Mixed from FOH

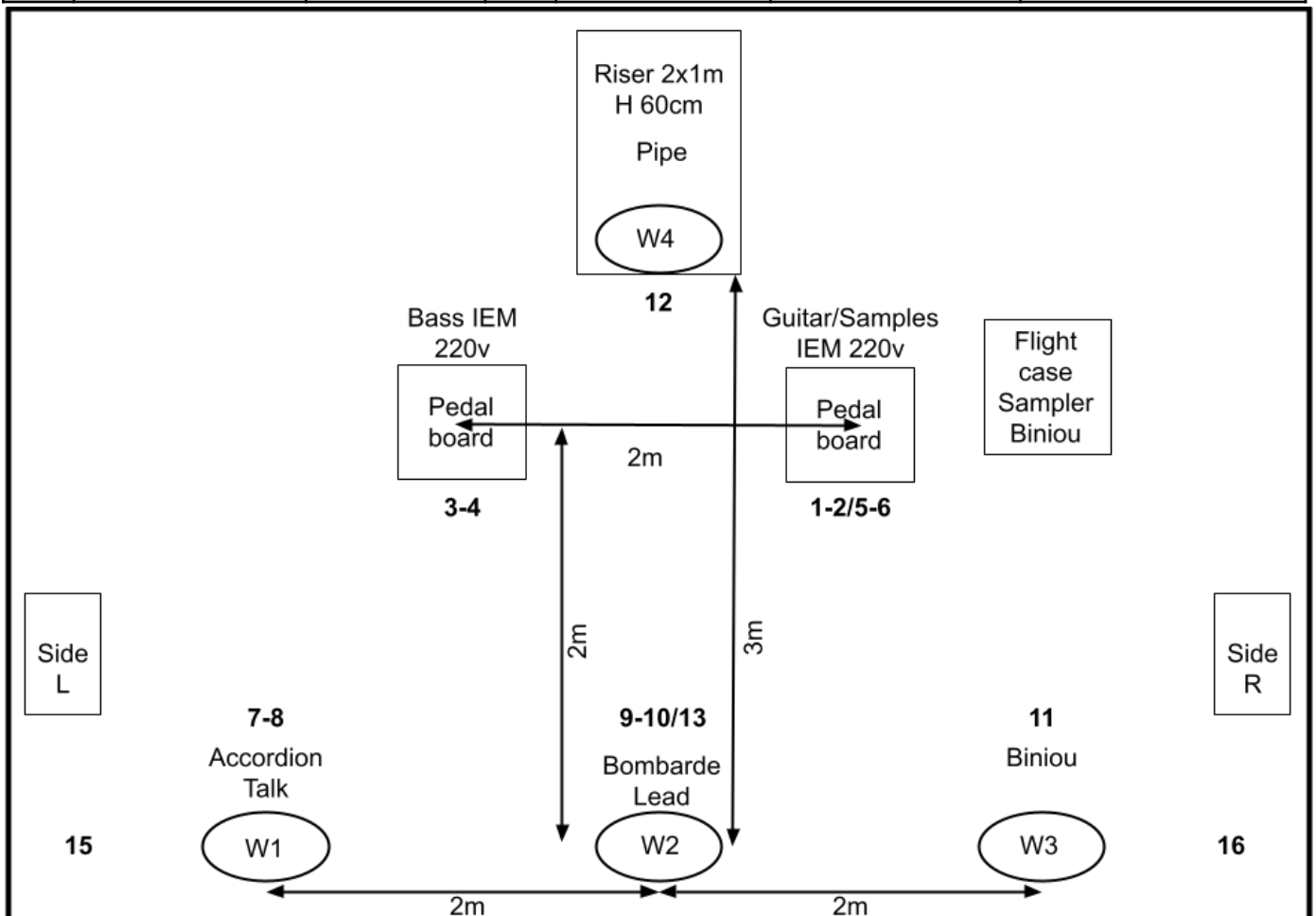
- 2 Sides WITH sub
- 4 MONITORS
- 2 wired IEM provided

We like D&B M4, Adamson M15.



PATCH LIST-STAGE PLOT * Phantom Power/48v

	Instruments	Mics		Instruments	Mics	Stand
1	SAMPLES L	XLR	9	BOMBARD 1	XLR*	
2	SAMPLES R	XLR	10	BOMBARD 2	XLR*	
3	BASS	XLR*	11	BINIYOU	XLR*	
4	AMP	XLR	12	UILLEANN PIPE	XLR	SMALL Boom stand
5	GUITAR L	XLR*	13	LEAD	XLR	TALL Heavy round base
6	GUITAR R	XLR	14			
7	ACCORDION High	XLR*	15	AUDIENCE L	XLR*	TALL Boom stand
8	ACCORDION Low	XLR	16	AUDIENCE R	XLR*	TALL Boom stand





LIGHT SPECS

Légende plan de feu



PC 1K type Juliat 610



SPOT (mistral
minimum,bmfl,viper....)



PAR 64 CP61



WASH (spiider
minimum,mac aura,k20...)



FL 1300



PAR RUSH ZOOM



DECOUPE 1K
type 614 juliat



PAR RUSH ZOOM
SOL



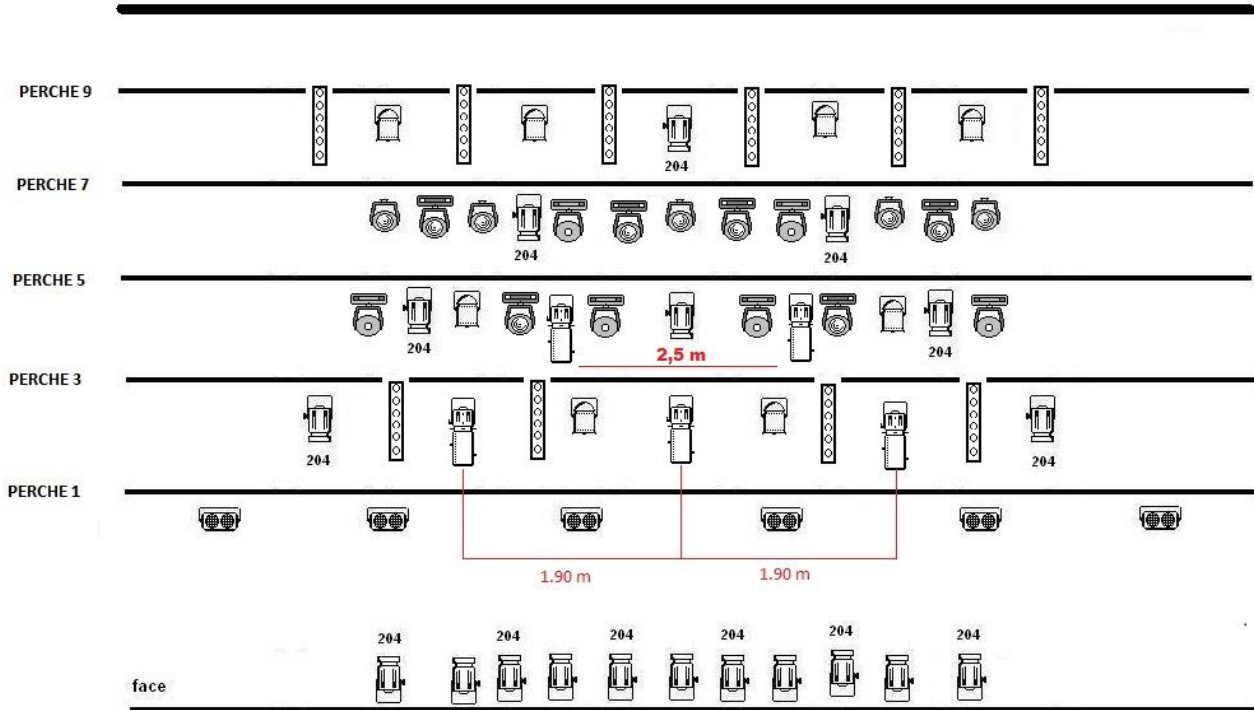
ELIDYS STRIP
ou SUNSTRIP

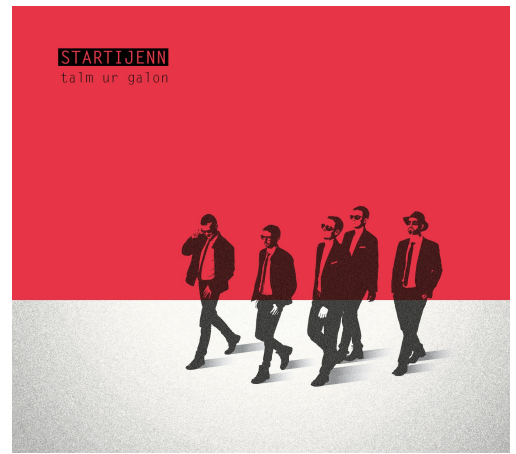


machine à brouillard

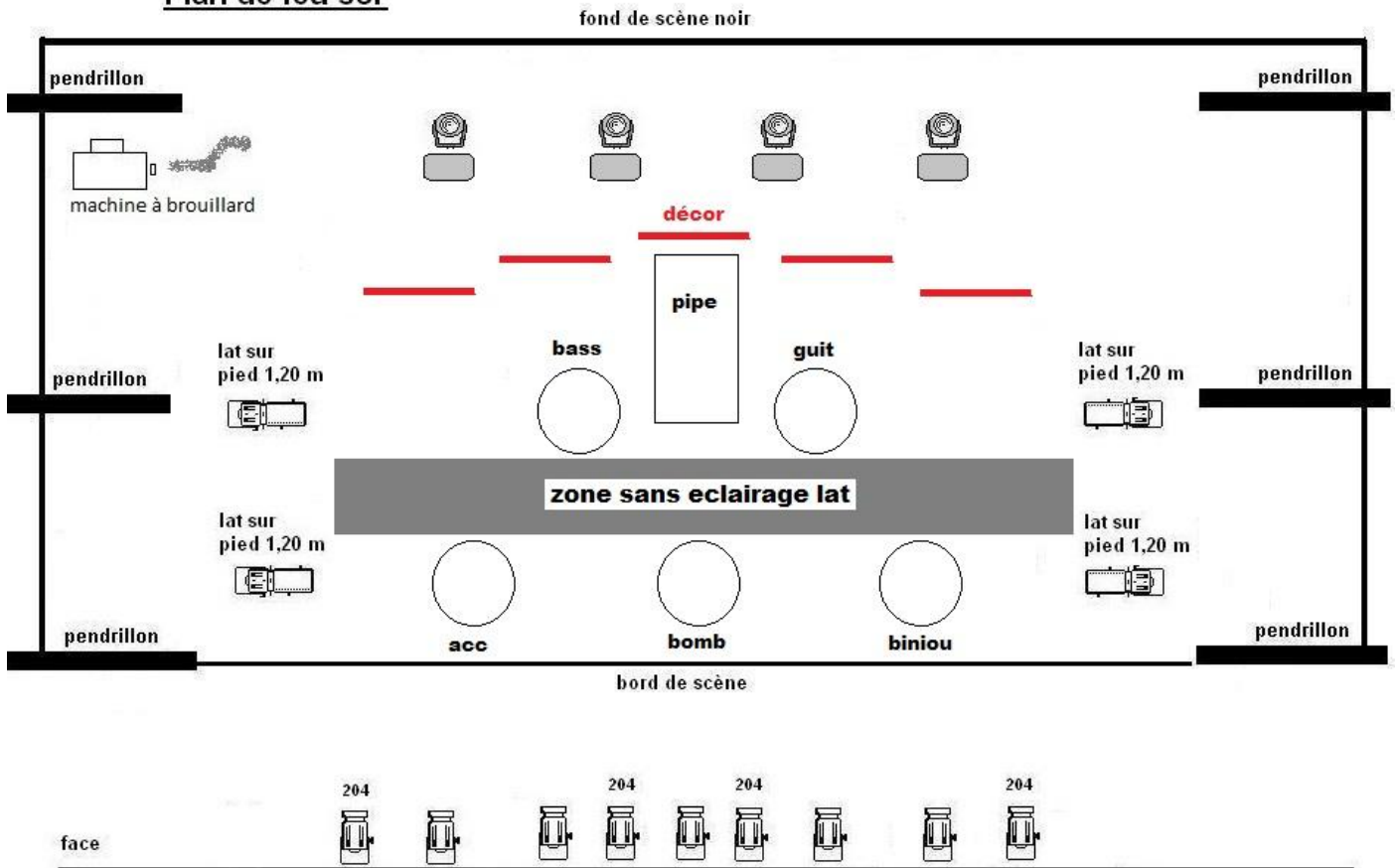
TYPE MDG
selon le lieu

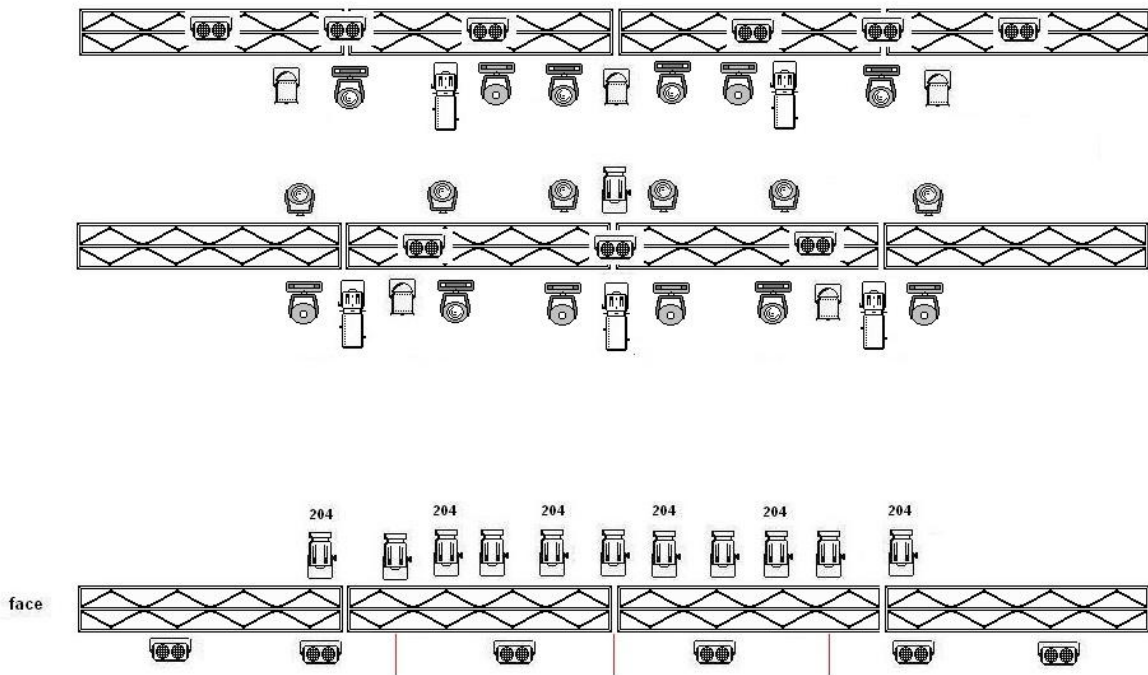
contact : **LOISEAU Camille**
06.80.20.63.59
camlepiaf@wanadoo.fr

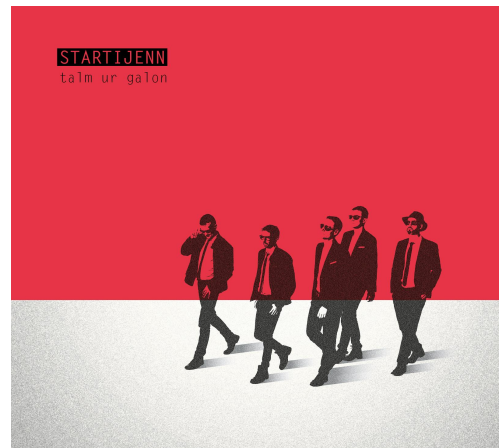




Plan de feu sol







Light Recommendations

1- IMPORTANTS Recommendations

The band traveled sometimes without his light engineer. The production will send you a simple conductor with some recommendations for the good running of the show.

The staging of the show involves setting up some Profil Spot with a riser stand on lateral position on the stage to create some lighting areas and darkness areas with which musicians can interact and manage their own light. (be in or out the light corridors) It will be easier for your lighting engineer to work.

It is very important, thanks to taking care of that. The production provides few indications of color and rhythm.

Thanks

Ps : PAR LED on the grill used to illuminated the decor. It can be easier to put them on the floor in front of each decor element.

2- The show is divided in 3 parts :

- Part 1 (3 tracks)

Very dynamic but without circle, pan or tilt effects

-Part 2 (3 tracks when biniou pipe player getting on the riser)

Static light to enhance the pipe player

Slow circle is possible for the second track

-Last Part (6 tracks)

Back to dynamic lighth with movements on Rap part

3- Gear List

6 x spot (mistral , bmfl , viper etc.)

6 x wash (spiider , mac aura , k20 etc.)

10 x par led (rush zoom etc....)

5 x Profil Spot 1K

19 x PC 1K (only 12 for version grill ponts)

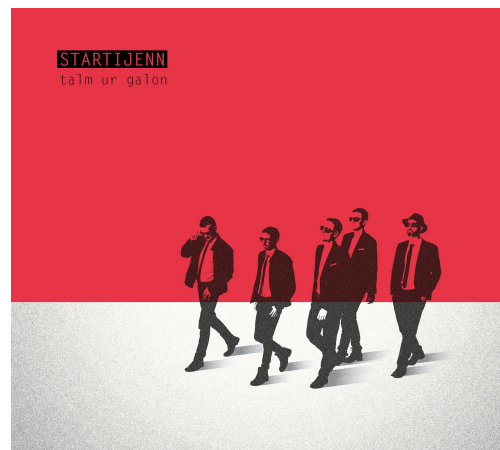
10 x Elidys strip ou sunstrip (only for version perches)

8 x Par 64 type CP61

15 x FL1300 (6 for version perches)

1 x smoking machin

1 x Grand MA 2 Light



Light Conductor

-ACT 1 dynamique, ACT 2 soft and calm, ACT 3 dynamic again

ACT 1

-Track 1 : SKEULENN RICHTER **Rhythm Dynamic but no move**

Decor : Red

wash : Red Vertical position

Entrance to the concert :

-Only Decor, then switch on the musicians in the order of appearance:

1- bass

2- accordion

3- guitar

4- bombarde + biniou

Then wash on

TALK

-Track 2 : DANVEZ TARZH **Middle Rhythm**

Decor : Lavender

Spot : White with gobo

Wash : lavande

-Track 3 : EL CHAMAN **Rhythm Dynamic**

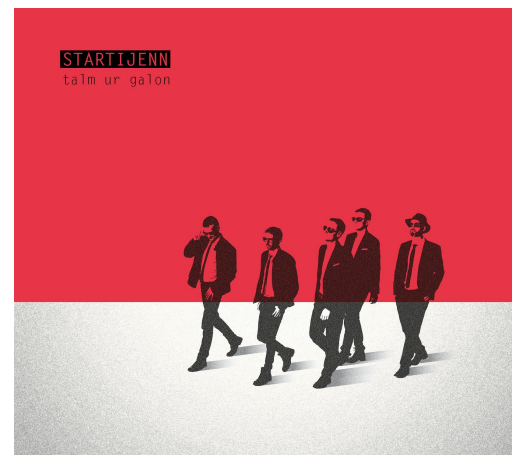
Decor : White

Spot : 201 with gobo

Wash : 126

-Intro Accordion

-Then solo bombard/biniou pipe (center)



TALK

ACT 2

-Track 4 : MOJENN ALAN TORRBOC'H **Calm and static**

Decor : Congo 181

Spot : white

Wash : Congo 181

-Intro Uilleann Pipe on the riser

-Track 5 : TYPHAINE **Calm**

Decor : lavender

Spot : White with gobo and slow circle on stage

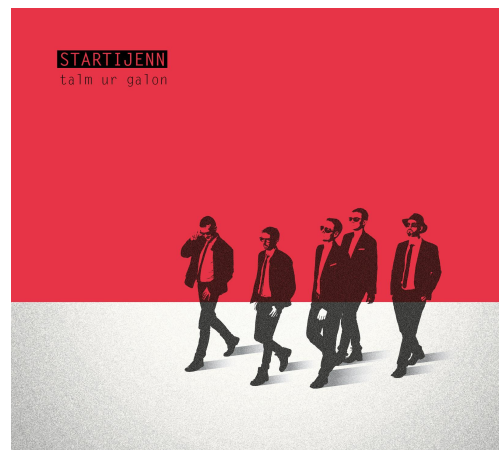
Wash : lavender

-Track 6 : REELS **Calm and static**

Decor : Blue

Spot : 201 sans gobo

Wash : Blue



TALK

ACT 3

-Track 7 : TALM UR GALON **Dynamic with movements / slow flash on heart beat blinder/strip**

Decor : White

Spot : White no gobo

Wash : Red

-Track 8 : SKILFOU AN NOZ **Dynamic Cut Rap**

Decor : 201

Spot : White with gobo

Wash : 201

-Track 9 : BACKPAKER **Dynamic Cut dimmer chasing**

Decor : White no gobo

Spot : Lavender

Wash : Lavender

-Track 10 : RAP **Dynamic, Cut, movements**

Decor : White

Spot : White no gobo with Tilt effect

Wash : 116

-Track 11 : STRAK HA PAK **Dynamic fast no movements dimmer chasing**

Decor : Lavande with chase

Spot : White no gobo fast chasing

Wash : Lavender with chasing

1ST FAREWELL

Encore :

-Track 12 : Loudeac **Middle Rhythm**

Decor : Red

Spot : White no gobo white dimmer chasing

Wash : Red

End with Red on decor only same as concert opening *LAST FAREWELL* Thanks a lot

STARTIJENN – Technical Rider – AUGUST 2022

This technical rider evolves regularly, you can find the latest version up to date on :

www.startijenn.bzh (pro tab)