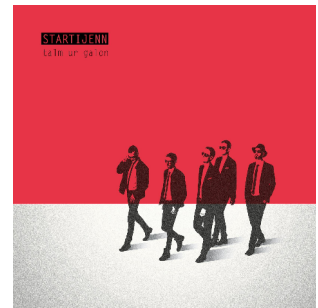


## ***Rider "CONCERT"***

---



**TOUR MANAGER : PAKER PROD- Yann Pelliet**

+33 661 446 772 [yann@pakerprod.bzh](mailto:yann@pakerprod.bzh)

1 rue Keramporiel

29900 Concarneau

Bretagne / France

The team is made up of 6 people : 5 musicians, 1 sound technician :

**Tangi Le Gall-Carré** : Accordion

**Yoann An Nedeleg** : Biniou, Uilleann Pipes

**Tangi Oillo** : Guitare, Machines

**Youenn Roue** : Bombarde, Lead Vocal

**Julien Stevenin** : Bass

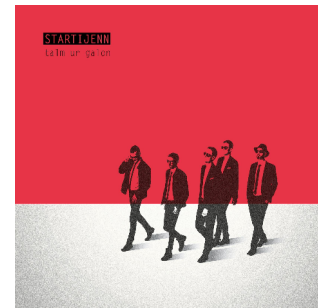
**Sound technician :**

**Ludo Florez** : +33 612 267 390 [ludo.florez@gmail.com](mailto:ludo.florez@gmail.com)

As the group does not have its own manager, this role is taken in turn by a member of the Startijenn team. In connection with Paker Prod, he will be your referent and your contact on the big day for all practical, organizational and logistical questions concerning the group's arrival.

**The STARTIJENN concert will be performed in one set lasting a maximum of 1h30 and will start before midnight.**

If you have any difficulties regarding this rider, call us !



## ***Rider "CONCERT"***

---

### **PRODUCTION**

#### **ACCESS :**

Please provide an access map to the venue of the performance, as well as contact details and access maps to accommodation and catering locations.

#### **IN CASE OF ROAD TRAVELLING PARKING LOT :**

Closed or guarded parking near the stage for a 9-seater Van.

#### **DRESSING ROOM :**

One or more comfortable lodges that can accommodate 6 people, lockable, from arrival until departure of the group (The keys will be made available to the group upon arrival).

Equipment to be provided:

- mirror, clothes racks, tables, chairs, sofas, ironing board and iron.
- still and sparkling water, cold drinks (sodas, beer, fruit juice), coffee, tea, fresh fruit, biscuits, etc.
- WIFI connection

#### **MEALS :**

Complete, hot meals will be served to the team according to a schedule determined in mutual agreement with production.

#### **ACCOMODATION :**

The concert producer will provide, at his expense, 6 single rooms in a minimum 2\*\* star hotel with closed or guarded parking.

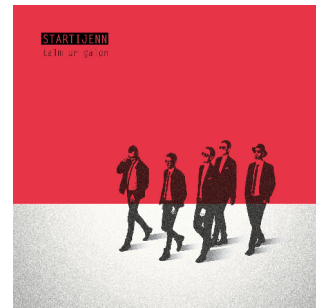
Plan for breakfast to be eaten very late and for rooms to be vacated by 12 p.m. at the earliest.

#### **MERCHANDISING :**

A lit place with a table. **Under no circumstances can a percentage or any remuneration be claimed by the venue or the producer of the concert.**

## *Rider "CONCERT"*

---



## STAGE AREA

The event producer undertakes to respond to the technical request by implementing the corresponding professional means.

### STAGE :

The stage is **flat, stable, smooth and matt black** in every way. With a minimum opening of 8 meters with 6 meters depth.

**The background will be black and the sides blacked out.**

Water bottles will be available to artists and technicians from the installation/sound check and for the duration of the show.

Provide black towels for the musicians for the soundcheck and for the show (2x5).

### Riser :

- Black color and black skirt 2x1m H:60cm

### Support :

- 2 x black cube (or flight case draped in black) L:60 l:60 h:80

### Backline :

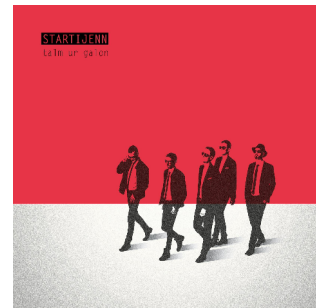
- Pipe : a black piano bench or drum stool
- 2 x guitare stand

### Scenography :

- 5 x Mic boom stand

### Lights :

Startijenn travels without a lighting technician. Instructions later in this document.



## *Rider "CONCERT"*

---

### SOUND SPECS

Durée d'installation et balance : 2 H

#### PA SYSTEM :

Professional quality 3 active channel Line Array sound system. The system will be adapted to the location and operational upon the arrival of the group. A qualified technician familiar with the system will be present throughout the service.

#### MIXING DESK :

FOH desk MUST be directly in the center, 2/3 the length of the venue in front of the PA.

➡ **In no case will it be under a balcony, against a wall or off-center.**

Please validate with production depending on the scenario :

1. We travel by road :
  - We provide a complete KIT (including Midas M32R, a Midas DL32 and IEM connections).
2. We travel by train or plane :
  - We only provide the stage rack (DL32+IEMs), please provide us with a Midas M32/M32R **exclusively dedicated to the use of Startijenn.**

➡ **In all cases, the service provider will provide 1 RJ45(STP)/AES50 connection cable between the stage and the console, available upon our arrival.**

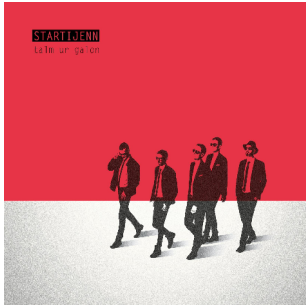
#### MONITOR :

##### **Mixed from FOH**

- 2 Sides with subs.
- 4 Wired IEMs provided by the group.
- 1 HF IEM on the 626-668MHz band provided by the group. Please confirm the compatibility of this frequency band in your area.

**The sound system must be installed and operational before the group arrives.**

Rider "CONCERT"

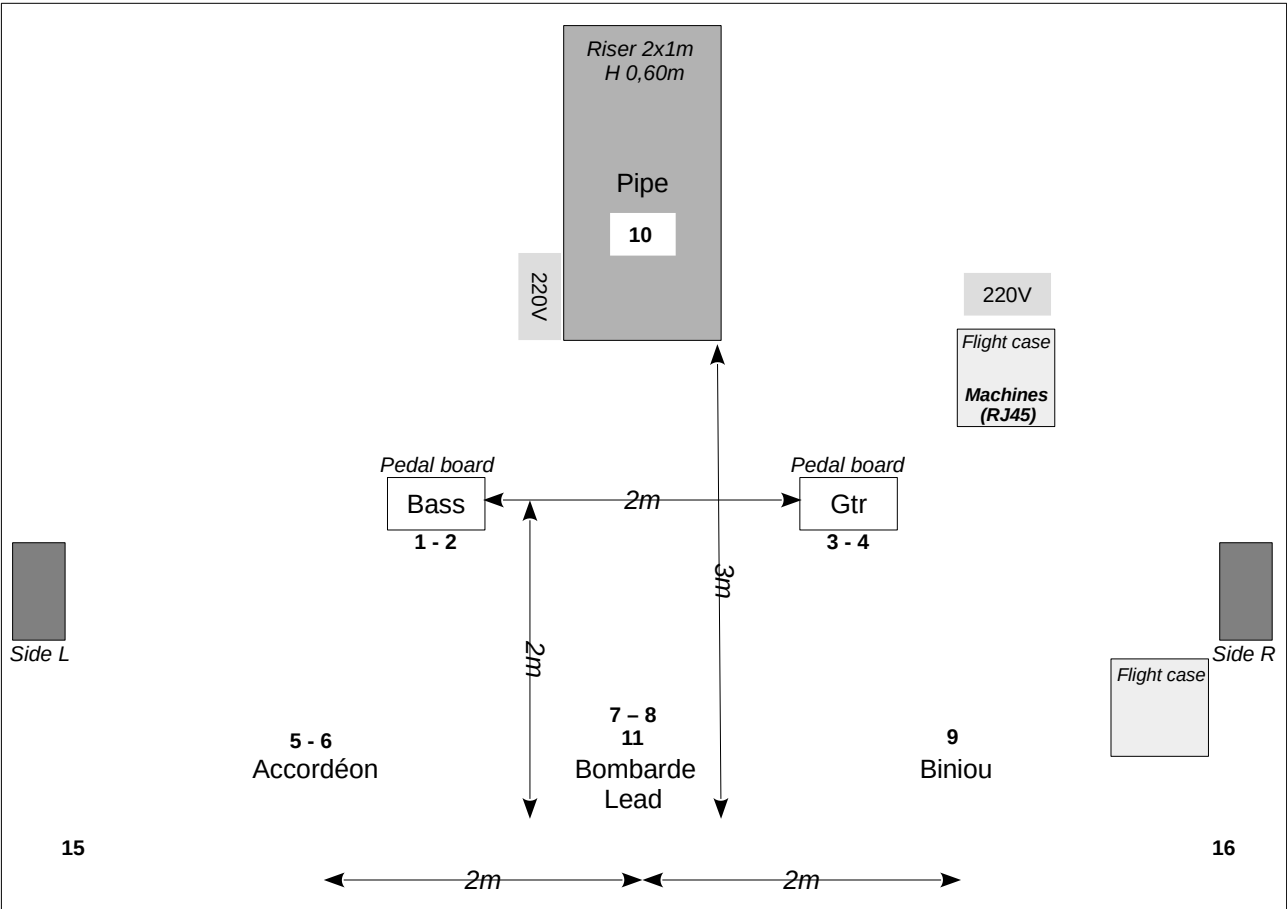


PATCH-STAGE PLOT

\* Phantom 48V

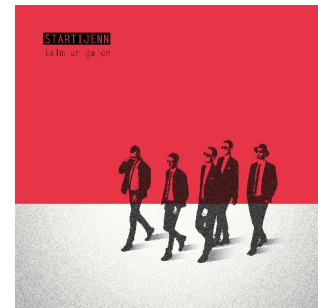
Ch	Instrument	Mic	Patch	Ch	Instrument	Mic	Patch	Stand
1	Bass DI	XLR*	DL32-1	8	Bombarde Col	XLR*	DL32-8	
2	Bass Amp	XLR	DL32-2	9	Biniou	XLR*	DL32-9	
3	Guitare L	XLR*	DL32-3	10	Uilleann Pipe	XLR*	DL32-10	Small boom stand
4	Guitare R	XLR*	DL32-4	11	Lead Vocal	XLR	DL32-11	Tall heavy round base
5	Accordion MD	XLR*	DL32-5					
6	Accordion MG	XLR*	DL32-6	15	Ambiance SL	XLR*	DL32-15	
7	Bombarde Pav	XLR*	DL32-7	16	Ambiance SR	XLR*	DL32-16	

→ The machines are connected via RJ45 directly to our rack, we provide this connection (15m).



# *Rider "CONCERT"*

---



## LIGHT SPECS

### Légende plan de feu



PC 1K type Juliat 610



SPOT ( mistral  
minimum,bmfl,viper....)



PAR 64 CP61



WASH ( spiider  
minimum,mac aura,k20...)



FL 1300



PAR RUSH ZOOM



DECOUPE 1K  
type 614 juliat



PAR RUSH ZOOM  
SOL



ELIDYS STRIP  
ou SUNSTRIP

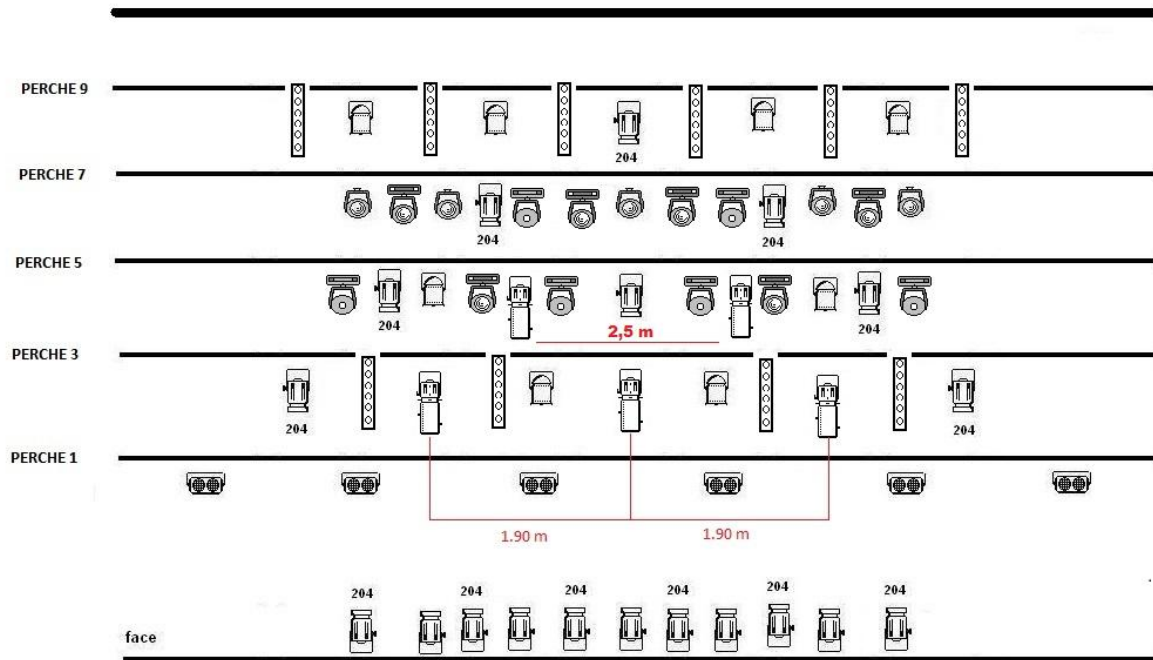
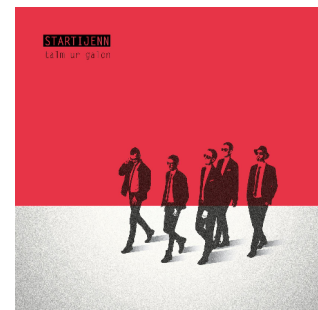


machine à brouillard

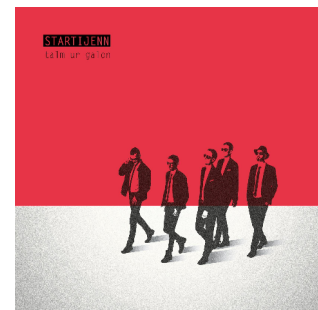
TYPE MDG  
selon le lieu

contact : LOISEAU Camille  
06.80.20.63.59  
camlepiat@wanadoo.fr

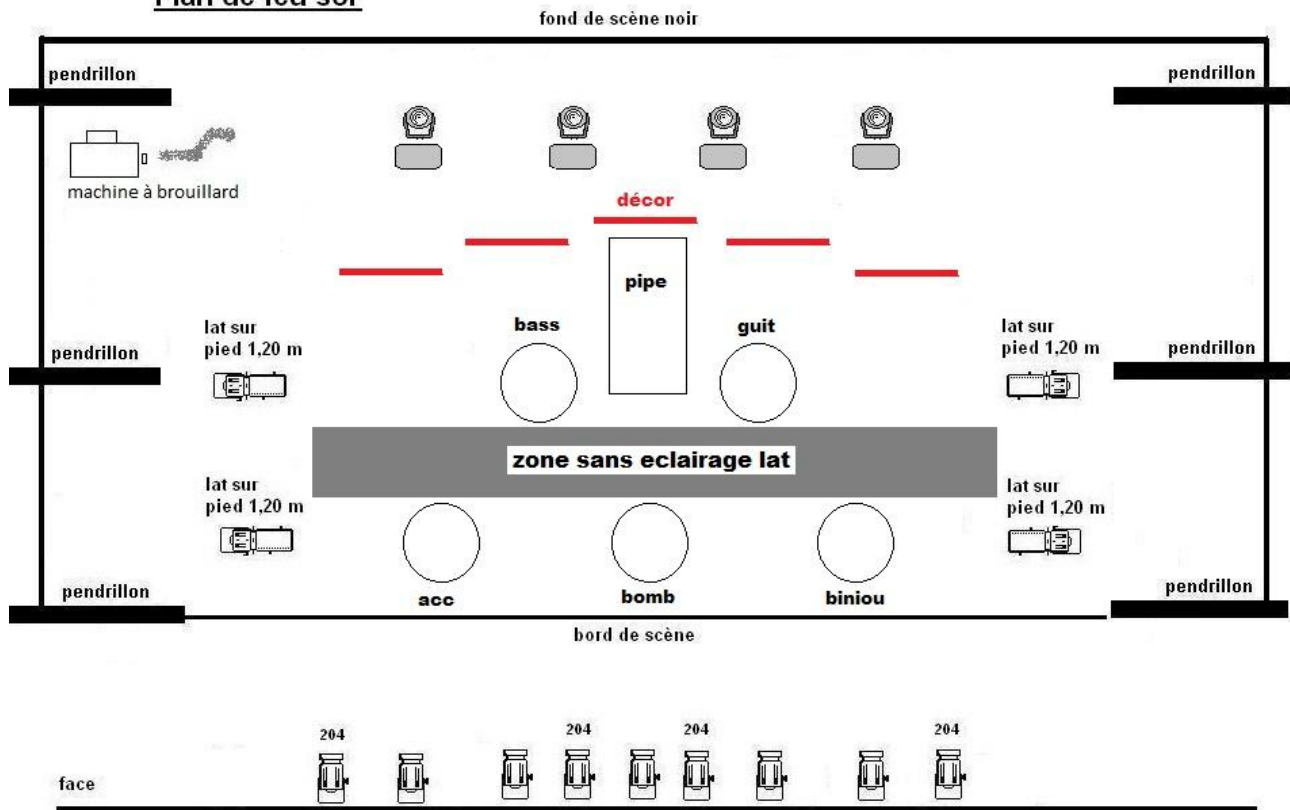
# Rider "CONCERT"



# Rider "CONCERT"



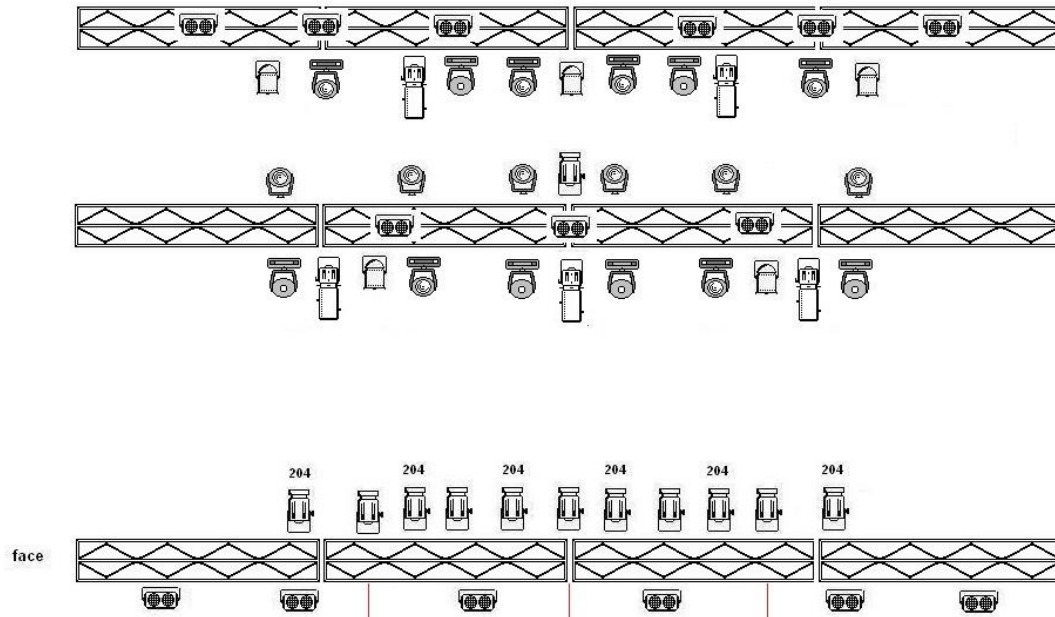
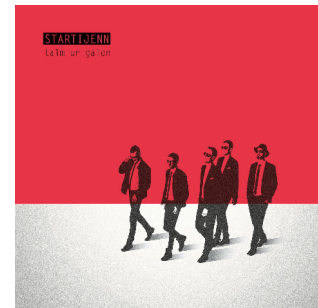
## Plan de feu sol





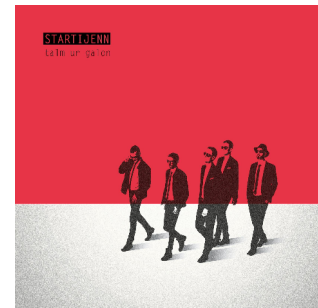
# *Rider "CONCERT"*

---



# *Rider "CONCERT"*

---



## **1. IMPORTANT Recommendations**

As the group often travels without its lighting designer, the production reserves the right to provide you with simplified conduct and, above all, informs you of the recommendations that we believe are necessary for the smooth running of the show.

The staging of movements requires in particular and in a manner that is difficult to negotiate the presence of side cutouts on legs in order to create corridors of light but also in fact corridors of shadow where the musicians will camouflage themselves when they are not do not play which will also facilitate the front work of the console because by lighting the side cutouts, the artists will manage their own lighting. This is very important, please take this point into consideration. The rest can be more easily improvised by your lighting designer, we just give him some indications of color and rhythm.

Thanks !

Ps : the LED pars of the grill used to light the decor (one per module) it is possible, to facilitate assembly, to place them at the foot of each module instead of the poles or bridges

## **2. The show is broken down into three acts :**

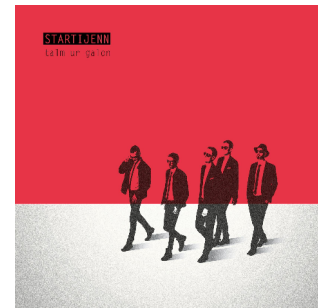
- **First part** ( the first three songs )
  - very dynamic but without machine movement effect (they can change position but not circle, pan, tilt etc.)
- **Second part** when the biniou player climbs on the riser, three songs also.
  - Tables placed highlighting the pipe on the practicable there may be a slow circle on the waltz.
- **Last part** until the end
  - return to dynamism and machine movements with sung Rap parts

## **3. Liste de matériel**

6 x spot ( mistral , bmfl , viper etc.)  
 6 x wash ( spiider , mac aura , k20 etc.)  
 10 x par led ( rush zoom etc....)  
 5 x découpes 1K  
 19 x PC 1K ( only 12 for the deck grill version )  
 10 x Elidys strip or sunstrip ( only for the pole version )  
 8 x Par 64 type CP61  
 15 x FL1300 ( only 6 for the pole version )  
 1 x fog machine ( adapted to the place )

# *Rider "CONCERT"*

---



## Conduite lumière

### ACT 1

#### **1. SKEULENN RICHTER**

spot : white without gobo position musicians

wash : red right position

decor : red

rhythmic : dynamic but without movement

- Note: Entrance to the concert, only red decor then the cutouts in order of appearance:
  1. Bass
  2. Accordion
  3. Guitare
  4. Bombarde + Biniou

#### **Presentation words**

#### **2. DANVEZ TARZH**

spot : blanc with gobo

wash : lavender

decor : lavender

rhythmic : medium

#### **3. EL CHAMAN**

spot : 201 with gobo

wash : 126

decor : white

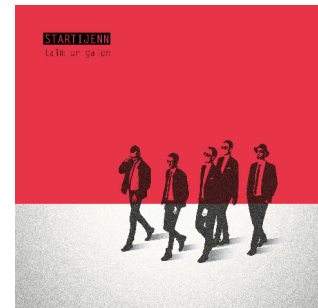
rhythmic : intro solo accordion ( stage left ) then solo Bombarde/Biniou ( center )

dynamique crescendo

#### **Presentation words Uilleann pipes**

# *Rider "CONCERT"*

---



## **ACT 2**

### **4. MOJENN**

spot : white with gobo riser position  
 wash : congo 181  
 decor : 181 congo  
 rhythmic : calme , tableau

### **5. TYPHAINE ( valse )**

spot : white with gobo slow circle on stage  
 wash : lavender  
 decor : lavender  
 rhythmic : calme , tableau

### **6. ARDIVINK (Reels)**

spot : 201 without gobo  
 wash : blue  
 decor : blue  
 rhythmic : calme , tableau

## **ACTE 3**

### **Presentation words Talm ur galon**

### **7. TALM UR GALON**

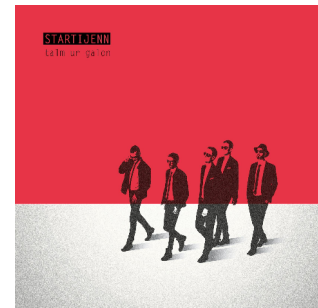
spot : white without gobo  
 wash : red  
 decor : white  
 rhythmic : dynamic with movements/long break heartbeats ( blinder fl ou strip )

### **8. SKILFOU AN NOZ**

spot : white with gobo  
 wash : 201  
 decor : 201  
 rhythmic : dynamic , dry , rap

### **9. KOUMOUL TRENK**

spot : white without gobo with tilt effect  
 wash : 116  
 decor : white  
 rhythmic : jerky , rap ; movement



## ***Rider "CONCERT"***

---

### **10. BACKPAKER**

spot : white without gobo with chase dimmer  
wash : lavender  
decor : lavender  
rhythmic : jerky dynamics chase dimmer

### **11. STRAK HA PAK**

spot : white without gobo fast chase  
wash : lavender with chase  
decor : lavender with chase  
rhythmic : fast, without movement but with dimmer chase

### **1st FAREWELL**

Return with presentation of the musicians

### **12. KORFOU NEVEZ**

spot : white with gobo  
wash : 201  
decor : 201  
rhythmic : dynamic

### **13. RAVINE**

spot : white without gobo  
wash : red  
decor : red  
rhythmic : medium

- End with only red decor as at the opening of the show

### **FINAL FAREWELL**

For any information :  
Camille LOISEAU  
tel : +33 680206359  
mail : camlepiaf@wanadoo.fr